

Photometric & Chromaticity Report

Celeb Ikon 12: Bare Optics - 3200K

Product Part Number: CE1.00101

Report Summary

Measurements:

Fixture Output: 142457 lm
Fixture Peak: 51261 cd
Fixture Efficacy: 129 lm/W
Intensity @ 5m: 2050 lux
Color Temperature: 3207 K
CRI: 94.7 CRI R9 Value: 86.8
CQS: 95.1
TLCI: 98
TM-30 Rf: 96.5
TM-30 Rg: 102.8
Beam Angle (50%): 111.9°
Field Angle (10%): 154.8°
Cutoff Angle (3%): 168°

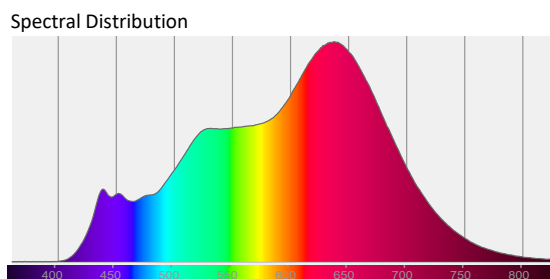
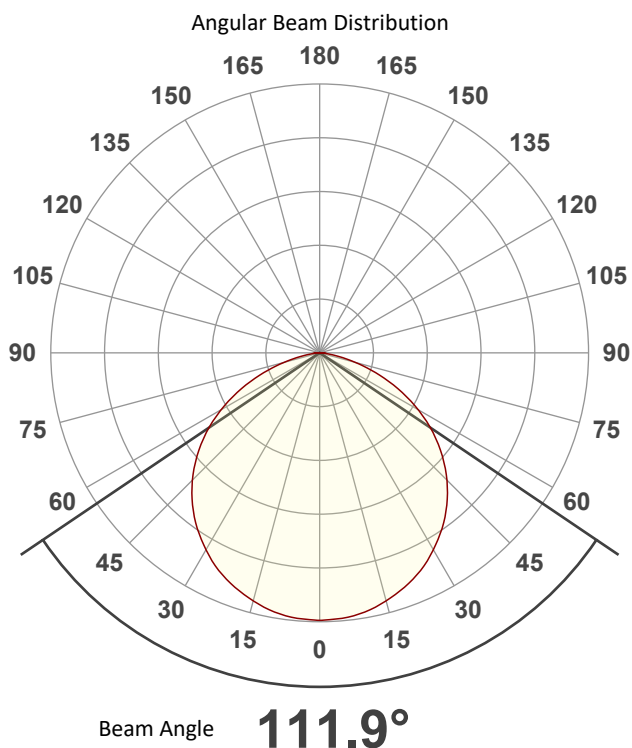


Conditions:

AC Supply: 194 V, 60 Hz
Power: 1120.87 W
Current: 5.77 A
Power Factor: 0.99

This data sheet conforms to American National Standard E1.9 – 2007 (R2017). LabSpion Goniometer at the Chauvet PD Optics Laboratory in Davie FL on 3/5/2026 to LM-63-2002 Standards.

Overall Measurement



Tested Color (CIE 1931):

X: 0.424

Y: 0.401

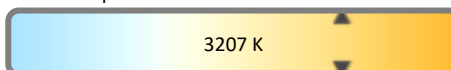


Light Quality

CRI: 94.7

Color Temperature

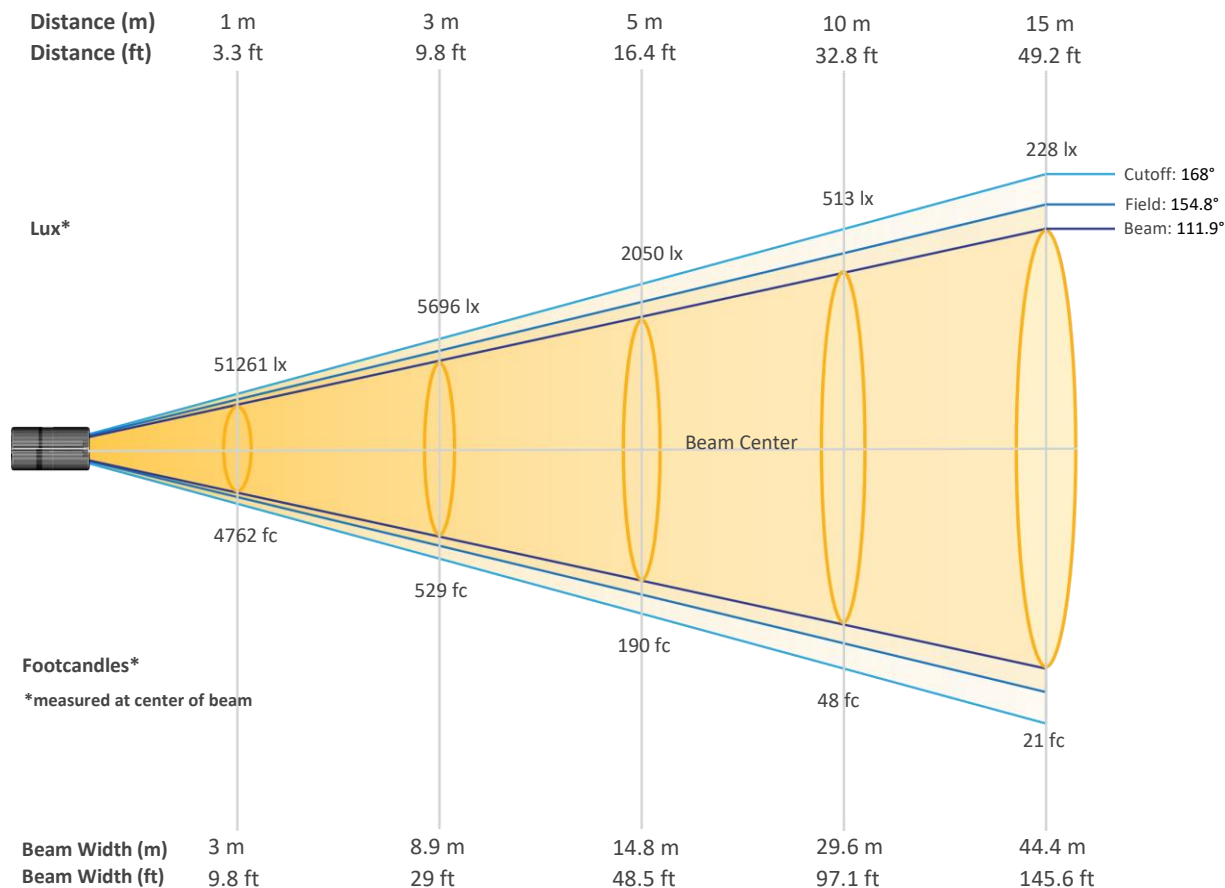
3207 K



Photometric & Chromaticity Report

Celeb Ikon 12: Bare Optics - 3200K

Beam Details

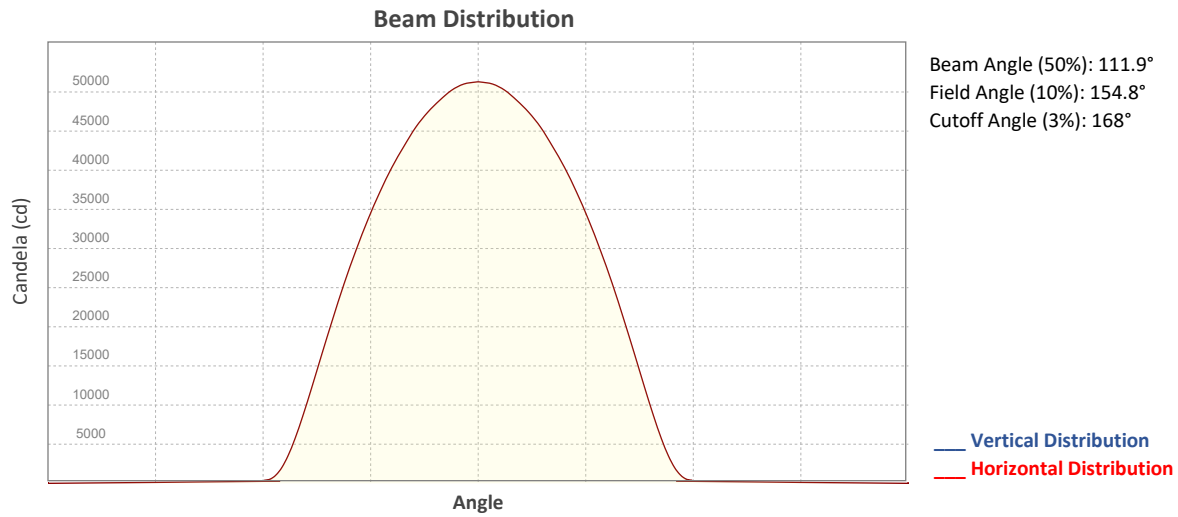


Beam Intensities from 1-20m (3.3-65.6ft)

Distance	1m	2m	3m	4m	5m	6m	7m	8m	9m	10m
Lux	51261	12815	5696	3204	2050	1424	1046	801	633	513
Distance	11m	12m	13m	14m	15m	16m	17m	18m	19m	20m
Lux	424	356	303	262	228	200	177	158	142	128
Distance	3.3ft	6.6ft	9.8ft	13.1ft	16.4ft	19.7ft	23ft	26.2ft	29.5ft	32.8ft
FC	4762	1191	529	298	190	132	97	74	59	48
Distance	36.1ft	39.4ft	42.7ft	45.9ft	49.2ft	52.5ft	55.8ft	59.1ft	62.3ft	65.6ft
FC	39	33	28	24	21	19	16	15	13	12

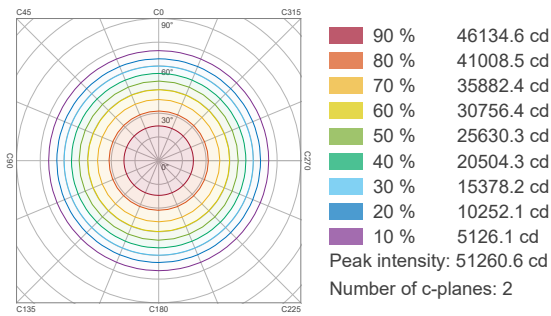
Photometric & Chromaticity Report

Celeb Ikon 12: Bare Optics - 3200K

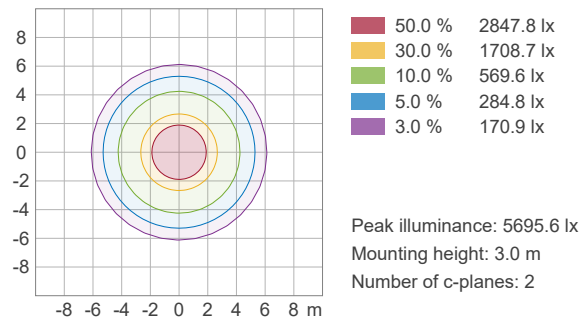


ISO Diagrams

ISO Candela Diagram



ISO Lux Diagram



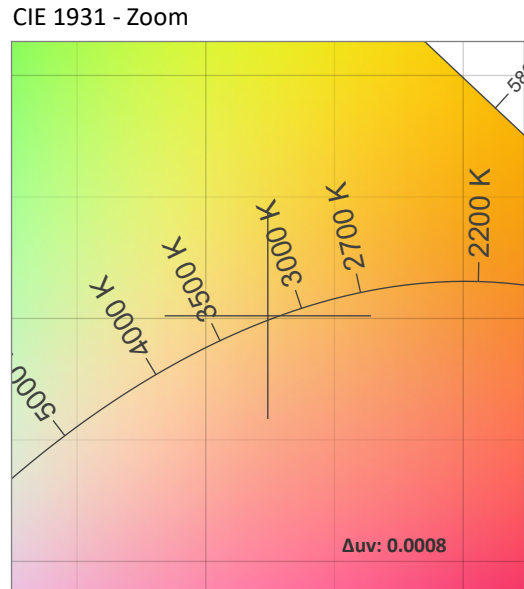
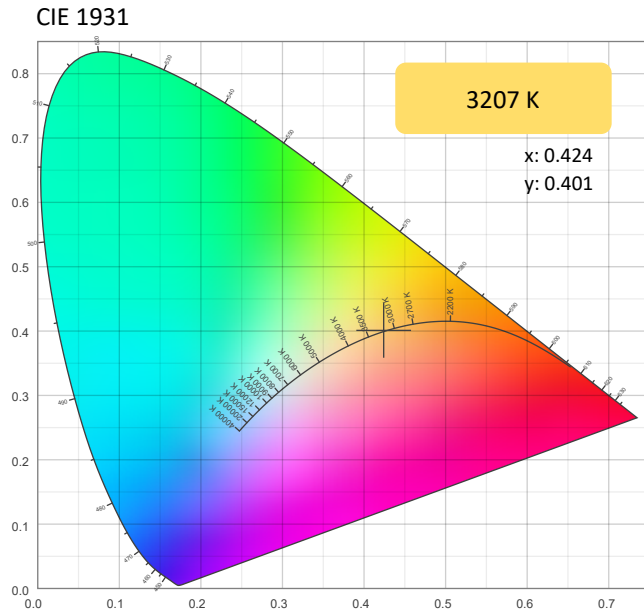
TLCI Color Checker



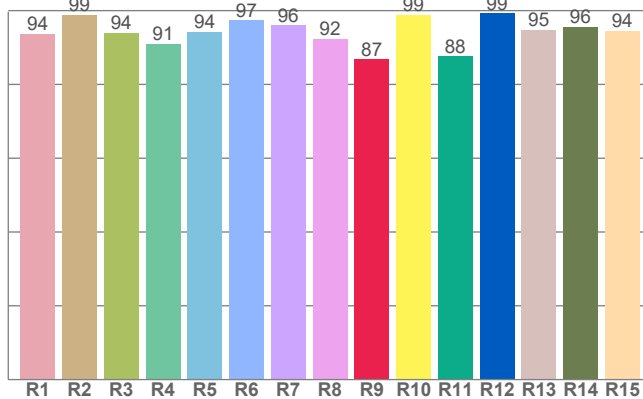
Photometric & Chromaticity Report

Celeb Ikon 12: Bare Optics - 3200K

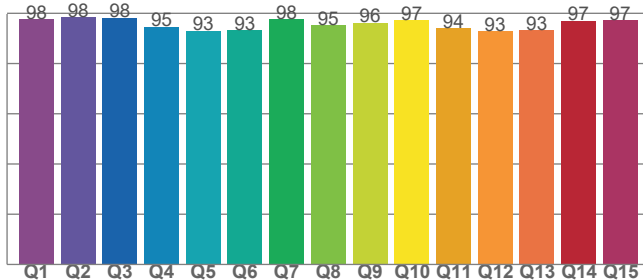
Chromaticity



CRI: 94.7 (R1-R8)



CQS: 95.1



Color Parameters

Color Temperature	Color Coordinate CIE 1931	Color Coordinate CIE 1931
CCT	x	y
3207 K	0.424	0.401

Color Deviation from Black Body Curve	Color Coordinate CIE 1964	Color Coordinate CIE 1964
Δuv	u	v
0.0008	0.244	0.346

Color Rendering Index	Red Component	Color Quality Scale
CRI	CRI - R9	CQS
94.7	86.8	95.1

Television Lighting Consistency Index	Color Fidelity	Color Gamut
TLCI	TM30 - Rf	TM30 Rg
98	96.5	102.8

Photometric & Chromaticity Report

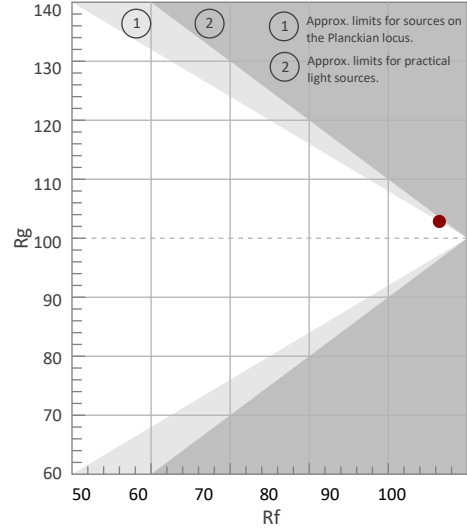
Celeb Ikon 12: Bare Optics - 3200K

TM-30 Details

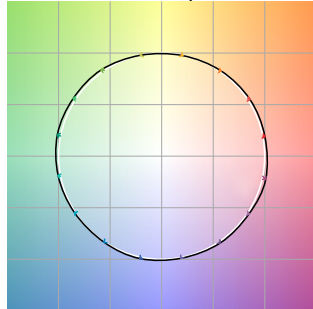
Rf 96.5
Fidelity Index
(Rg)

Rg 102.8
Gammut Index (Rg)

Hue Bin	R _f	Graphic shifts (%)	
		Chroma	Hue
1	96	2%	-1%
2	95	2%	-2%
3	95	1%	-2%
4	98	0%	-1%
5	98	0%	1%
6	95	2%	2%
7	96	2%	1%
8	95	3%	-1%
9	96	2%	-1%
10	97	1%	-2%
11	98	0%	0%
12	96	2%	-1%
13	98	1%	-1%
14	97	2%	0%
15	96	2%	1%
16	95	3%	-2%



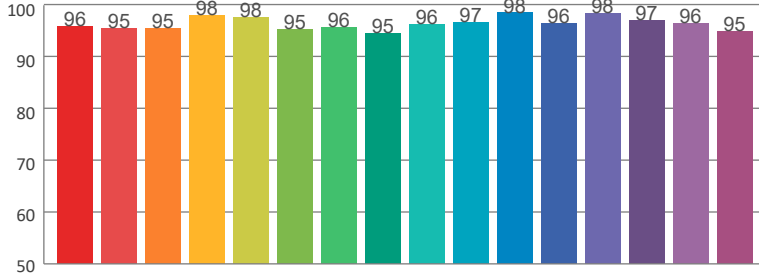
Color Vector Graphic



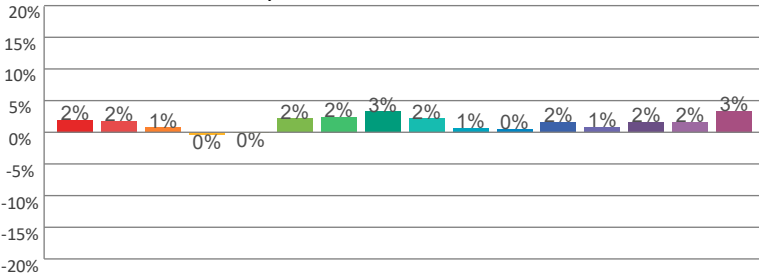
Color Distortion Graphic



R_f by Hue



Local Chroma Shift by Hue



Color Evaluation Sample

