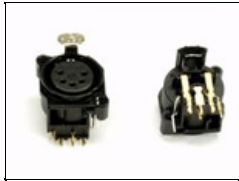


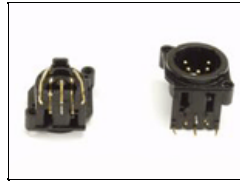


**VIS-6P-120**  
VistaBeam 600 DMX Pole-Op, 120vac

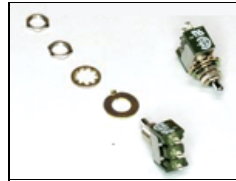
## Spare Parts



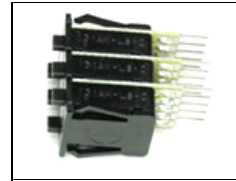
**1270157**  
**No longer available**  
CT-Xlr-PCB-Female-5-  
Pin-Right-Angle



**1270158**  
**No longer available**  
CT-Xlr-PCB-Male-5-Pin-  
Right-Angle



**1290013**  
SW-Toggle-Miniature-  
SPDT-5A



**1290023**  
SW-Wheel-3-Section-  
w/Lens



**1290047**  
SW-Rocker-DPST-16A-  
Lit-Red-125V



**1300018**  
Fu-Cer-Sloblow-  
10A/250V for 1320017



**1320017**  
Fuhldr-Pnl/Mnt-1/4X1-  
1/4-Lopro Slot



**1380022**  
Lampholder G10Q



**2240022**  
Knob Rnd Collet 1/8" X  
14.5mm Blk



**2240024**  
Knob Nut Cover 14.5mm  
Blk



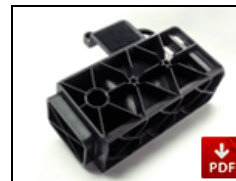
**2240025**  
Knob Cap 14.5mm Yel  
w/Wht Line



**2290023**  
Lamp Clip Assembly



**5010096**  
VistaBeam Yoke Bracket



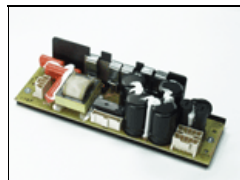
**5250005**  
VistaBeam Molded  
Corner Top Right &  
Bottom Left  
(from back of fixture)



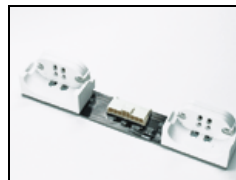
**5250006**  
VistaBeam Molded  
Corner Top Left & Bottom  
Right  
(from back of fixture)



**6110044**  
VistaBeam 610 Lamp  
Selector SW



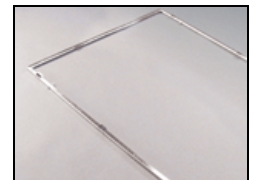
**6800096**  
Vista 96W Ballast UL



**6800112**  
Vista Lampholder PCB (2  
LAMP)



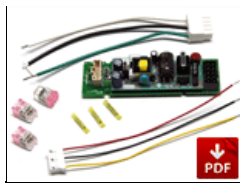
**6800125**  
**No longer available**  
VistaBeam  
DMX Motherboard



**GFR-V6**  
VistaBeam 610  
Gel Frame



**LVR-V690**  
VistaBeam 610  
Louver 90°



**PRT-PWS52**  
Repair Kit PWS 5/12V  
Dmx Samtec



**PRT-SC200**  
Screws for Ballast/ DMX  
Lid (100PK)



**7010036**  
**No longer available**  
VistaBeam 600/610 Pole-  
Op Yoke Assembly

**Lamps:**



**964-K32**  
96W Kino KF32 (Twin)



**964-K55**  
96W Kino KF55 (Twin)