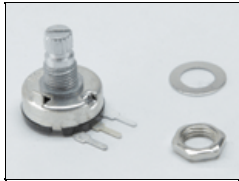




IMR-S6-120
Imara S6 DMX Yoke Mount, 120vac

Spare Parts



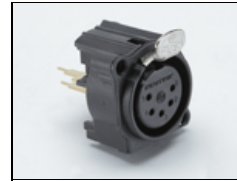
1060034
Resvar 50K 0.1W Lnr Pcb
Knurl



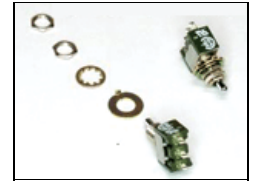
1170005
Filter EMI 4A
120/250VAC w/ Wires



1270305
CT-Xlr-Panel-Male-5-Pin



1270325
CT-Xlr-Panel-Female-5-
Pin



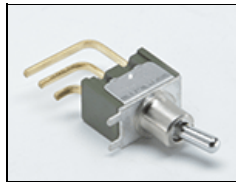
1290013
SW-Toggle-Miniature-
SPDT-5A



1290023
SW-Wheel-3-Section-
w/Lens



1290055
Switch Rocker Mini DPST
12A 250V



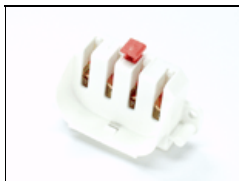
1290060
Sw Toggle Mini SPDT 5A
PCB



1300020
FU-5X20-CER-Sloblow-
4A/250V for 1320015



1320015
Fuseholder Screw Mount
5X20-0.187 Slot



1380014
Lampholder-Compact-
2G11



2240020
Knob T 1/4-28 X 1-5/8"
ST ZI Kino (+2000043)



2240023
Knob Rnd Collet 6mm X
14.5mm Blk



2240024
Knob Nut Cover 14.5mm
Blk



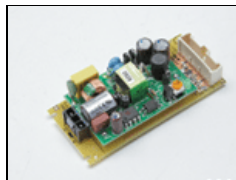
2240025
Knob Cap 14.5mm Yel
w/Whit Line



5010096
Yoke Bracket



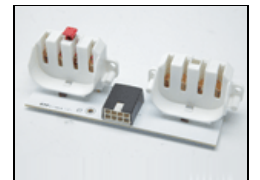
6610026
Compact QT
2X54W/120vac-Dim



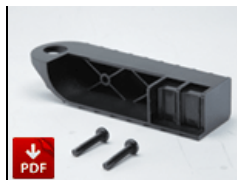
6800149
Power Supply 5V 5W 12V
50MA



6800226
Dmx Jacks Conn Back



6800187
Imara Lampholder
Assembly



6800192
Imara S6 Switch Control Board. Replace w/ same.

6800199
DMX Motherboard-Imara

6800206
No longer available
Mosfet Switcher 3x

FRB-IM1
Imara Frame Bracket Assembly #1

FRB-IM2
Imara Frame Bracket Assembly #2



GFR-IM6
No longer available
Imara S6 Gel Frame

LVR-IM690
Imara S6 Louver/Honeycomb, 90°

PRT-SC300
Screws for Ballast/ DMX Lid (100PK)

Lamps:



55C-K32
55W Kino KF32 Compact

55C-K55
55W Kino KF55 Compact