

2840 N. Hollywood Way  
Burbank, CA U.S.A. 91505-1023  
Tel: +1 (818) 767-6528  
Fax : +1 (818) 767-7517  
www.kinoflo.com



**CEL-450CU**  
Celeb 450 DMX Center Mount, Univ

## Spare Parts



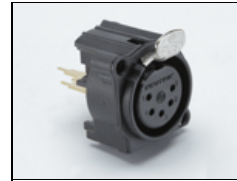
**1160090**  
Ind Antenna Hinged  
2.3DB 2.4GHz



**1180074**  
PWS SL 39V/425W  
100/240VAC



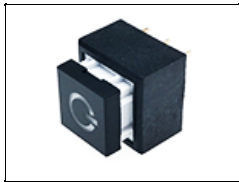
**1270305**  
CT-Xlr-Panel-Male-5-Pin



**1270325**  
CT-Xlr-Panel-Female-5-Pin



**1270383**  
CT-IEC Screw Inlet  
Fuseholder



**1290068**  
Switch SPDT Lit Red  
Green Graphic



**1290069**  
SW SPST 5ESH965 Base



**1290071**  
SW 5ESH965 Cap Red  
15.0mm



**1290072**  
SW 5ESH965 Cap Green  
15.0mm



**1290073**  
SW 5ESH965 Cap Black  
15.0mm



**1290075**  
Switch Power Cap Only



**1300022**  
Fuse 5x20 Cer Slowblow  
6.3A/250V for 1270383  
(2 required)



**2240016**  
Knob Lever 5/16-18 /75  
Series



**2240023**  
Knob Rnd Collet 6mm X  
14.5mm Blk



**2240025**  
Knob Cap 14.5mm Yel w/  
Wht Line



**2240030**  
Knob T 5/16-18 #20  
Kino Mount (Wing)  
(Optional)



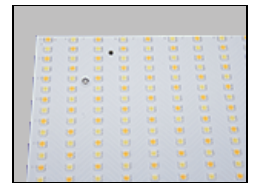
**2250003**  
Handle D 3x1-3/4" 10-32  
Int Blk



**2250004**  
Handle D 4" 10-32 Int  
Blk



**4010027**  
Celeb 450 Diffuser Panel



**4010054**  
Celeb LED/RGB Panel  
Version 3.0



**5160102**  
LED Control Bezel  
USB cover #2



**5260065**  
Kino Mount #20 Loose  
Jaw



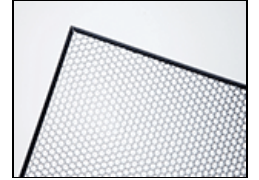
**6800228**  
DMX Jacks - Isolated



**6800235**  
LED Encoder



**6800241**  
LED Power Module Dual



**6800251**  
LED Controller w/ Timo  
Antenna



**7010063**  
Celeb 450 Center Mount  
Assembly



**FRB-C1**  
Celeb Frame Bracket  
Assy #1



**FRB-C2**  
Celeb Frame Bracket  
Assy #2



**LVR-CE490-P**  
Celeb 450 Louver/HP,  
90°



**MTP-LM**  
Kino 81 Lollipop w/  
Junior Pin



**PRT-CE100**  
Celeb Series Access  
"Slider" (4pk)



**PRT-M20Y**  
PRT-M20Y Kino #20  
Mount Kit Yellow



**PRT-M20SY**  
Kino #20 Mount Spacer  
Assembly



**PRT-SC300**  
Screws for Ballast Lid  
(100PK)

**PWC-L12/120**  
IEC Lock Power Cable,  
12ft 120VAC



**PWC-L12/230**  
IEC Lock Power Cable,  
12ft 230VAC

