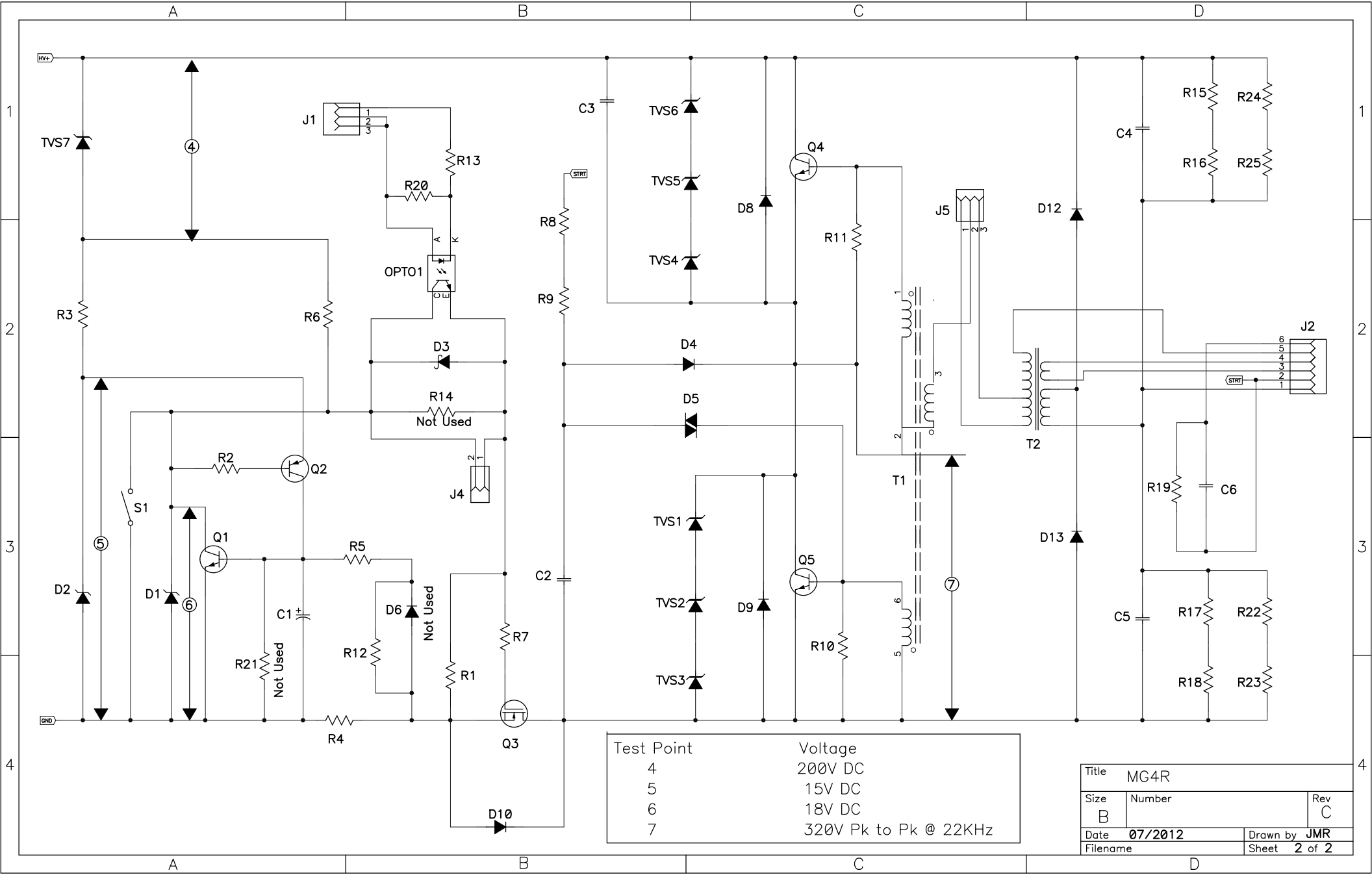


Test Point	Voltage
1	120V RMS
2	230V RMS
3	320V DC

Title		MG4R
Size	Number	Rev
B		C
Date	07/2012	Drawn by JMR
Filename		Sheet 1 of 2



Test Point	Voltage
4	200V DC
5	15V DC
6	18V DC
7	320V Pk to Pk @ 22KHz

Title MG4R		
Size B	Number	Rev C
Date 07/2012	Drawn by JMR	
Filename	Sheet 2 of 2	