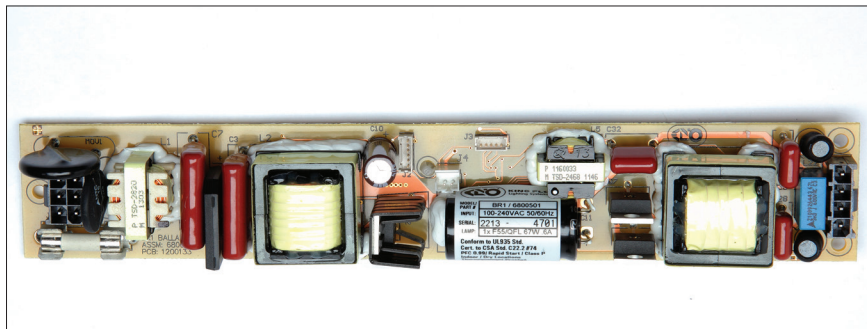

BR1 Ballast Board

(Part # 6800501)



The **BR1** Ballast Board is to be used as a replacement ballast board for the BarFly Series, model #'s **BAR-450**, **BAR-400D** & **BAR-200D**. For latest warranty information, see Kino Flo website at www.kinoflo.com

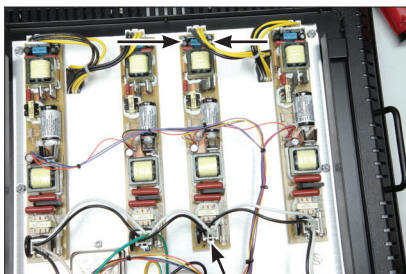
(Note: The BR1 ballast board has conformal coating seal, surface mounted components. No serviceable parts available. Please contact Dealer for service.)



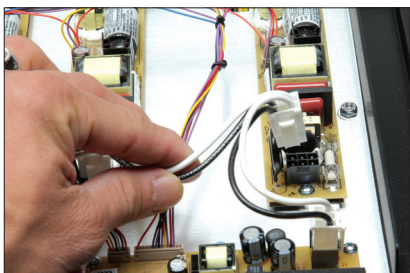
Ballast Board Removal & Installation



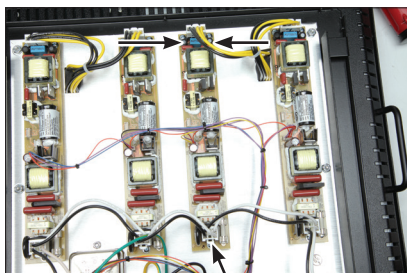
1) Remove ten (10) cover screws.



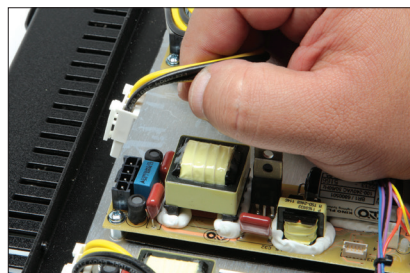
5) Remove three (3) ballast board screws.



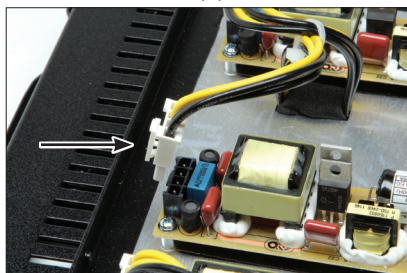
2) Remove AC input connector.



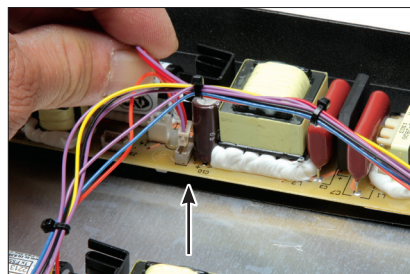
6) Remove board and install new ballast board and three (3) screws.



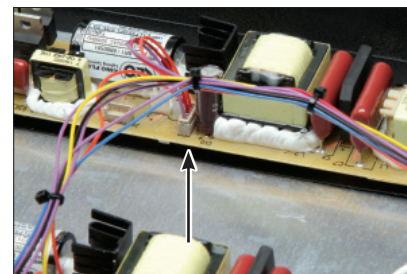
3) Remove lamp output connector.



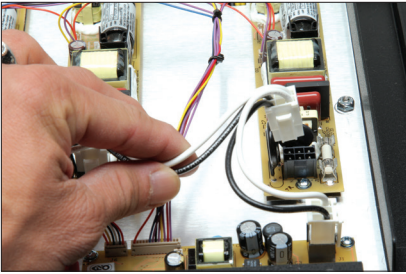
7) Install lamp output connector.



4) Remove DMX control connector.



8) Install DMX control connector.



9) Install AC input connector.



10) Replace cover with ten (10) cover screws.

For latest Warranty information and Certifications,
see Kino Flo website at www.kinoflo.com.

Environmental: Disposal of Old Electrical & Electronic Equipment.



This symbol on the product or on its packaging indicates that this product shall not be treated as household waste. This product is made of recyclable materials and should be disposed of in accordance with governmental regulations.

Kino Flo, Inc. 2840 N. Hollywood Way, Burbank, CA 91505, USA

Tel: 818 767-6528 website: www.kinoflo.com