

---

# Operation Manual

## Mega Double Universal Mega Single Universal



**KINO FLO®**  
Lighting Systems

# Mega Double System



**CFX-9602** 8ft Mega Double Fixture

**CFX-7202** 6ft Mega Double Fixture



**MTP-KM** Kino 81 "Slide-On" Mount w/  
Junior Pin (28mm)



**X09-25M** Mega Double Extension, 25ft



**BAL-227M-120U** Mega Double Ballast,  
Univ 120U

**BAL-227M-230U** Mega Double Ballast,  
Univ 230U

## Each System consists of:

- 1 Mega Fixture
- 1 Mounting Plate
- 1 Extension Cable
- 1 Electronic Ballast

# Mega Single System



**CFX-9601** 8ft Mega Single Fixture

**CFX-7201** 6ft Mega Single Fixture



**MTP-KM** Kino 81 "Slide-On" Mount w/  
Junior Pin (28mm)



**X07-25M** Mega Single Extension, 25ft



**BAL-127M-120U** Mega Single Ballast,  
Univ 120U

**BAL-127M-230U** Mega Single Ballast,  
Univ 230U

## Each System consists of:

- 1 Mega Fixture
- 1 Mounting Plate
- 1 Extension Cable
- 1 Electronic Ballast

# True Match® Lamps



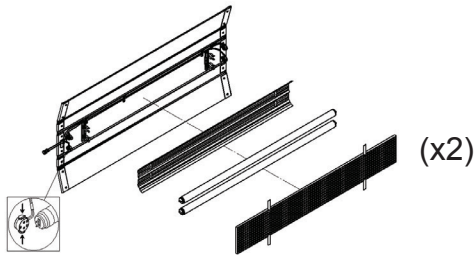
**962-K32-S** 8ft Kino KF32

**962-K55-S** 8ft Kino KF55

**722-K32-S** 6ft Kino KF32

**722-K55-S** 6ft Kino KF55

# Fixture Assembly



The Mega Double and Single fixtures are comprised of two removable Louvers, a Reflector and a Lamp Harness. The Louvers and Reflector are held in place with Velcro fasteners. The Lamp Harness is secured by means of a 1/4 turn fastener and two clips.

Note: The 8ft fixtures include two 4ft louvers; the 6ft fixtures include two 3ft louvers.



## To Release the Lamp Harness

Remove the harness from 2 clips located under the reflector. Rotate the 1/4 turn fastener clockwise to release harness.



The lamps can operate independent of the fixture allowing them to be built into sets or custom soft boxes or hand-held as a single tube for an eye-light.

**WARNING:** Always use safety-coated lamps to avoid injury if lamp breaks.

## Lamp Harness Color Codes



Double Harness

The Mega Double Harness wiring is color-coded. The same color-code must match at each end of the lamp for proper operation.

# Inserting Lamps



## Locking Lamp Connector:

Depress both tabs on lamp connector and apply to lamp pins. Push lamps into the fixture's Lamp Holder Clips.

**Note:** Mega 4Bank fixture is shown for example purposes only.

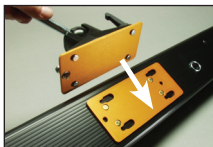
# Gelling the Fixture



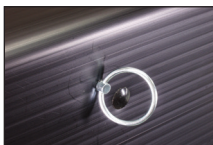
Restricting the airflow around the lamps can cause the lamps to operate hotter. This increased heat will raise the lamp's color temperature and green spike. Therefore, it is recommended to clip gels to the doors of the fixture.

**Remove louvers. Do Not** clip gels to louver. **Do Not** block the fixture ends in a manner that restricts airflow.

# Mounting the Fixture



Align the four shoulder rivets on the mounting plate (**MTP-KM**) to the holes in the mating plate and slide down. The locking pin will snap into place when the plate is properly seated.



The Silver Rings provide attachment points for a safety chain.



**To remove the plate**, pull up on the locking pin and reverse the mounting procedure.



A 180° turn loosens the orientation of the mount. A right turn tightens the mount.



The tension on the lock lever may be adjusted by pulling the handle away from the mount. This disengages the handle from the screw mechanism and allows it to be reoriented.

**Note:** You can also use a screwdriver to adjust the travel. Pull back on handle and adjust the screw in the center of the handle.

## Other Fixture Mounting Options



The grommet holes along the edge of the fixture are designed to allow the fixture to be screwed onto set walls.

# Extension Cable



To insert the cable, position the logo up to align the key ways on the extension cable with the circular receptacle on the ballast. Rotate the locking ring until it clicks into the lock position.

Lamps can operate as far as 75 feet from the ballast.  
(3 x 25ft extensions)



A **Splitter** can be used at the Ballast or on the end of an Extension Cable to split a Mega Double run into two Mega Singles. This allows for greater rigging flexibility.

# Ballast Operation

## **WARNING!**

- 1) ALWAYS TURN OFF THE BALLAST BEFORE connecting or disconnecting Lamps, Harnesses or Extension Cables.
- 2) Use only with Sine wave inverters. Do not operate on SCR dimmers.
- 3) If powering the ballasts through a Dimmer Pack, set the Dimmer to Non-Dim mode.

The Ballasts require 100 to 240 Volts AC 50/60 Hertz on an earth grounded circuit. The electronic Ballast operates at a high frequency of 25 kHz. It is dead-quiet, instant-on and lightweight.

## **Cold Temperature Operation**

The Mega Ballast series is designed to operate at temperatures from 14F to 122F (-10C to +50C). In cold temperatures, the Ballast may not strike the lamp(s) instantly. Switch the Ballast to OFF, wait seven seconds and try again. If the Ballast does not strike after two or three attempts, turn off the Ballast, check that the Extension and Harness connections are secure and re-strike. Once operating for a few minutes, the lamps should re-strike instantly.

# Mega Double Control Panel



- A) **Circular Output Connector:** Provides electrical power to the lamp head with the use of an extension cable.
- B) **Fuse:** Provides circuit protection. Note: If Fuse is “blown” or “open”, replace with same type of fuse rating as marked.
- C) **Manual Switches:** Turns lamps on and off manually.
- D) **HO/STD:** Set to **HO** for High Output and **Std** for Standard light output.

(Note: The Mega Double ballast is shown for example purposes.)

## Manual Operation

The Ballast operates remote from the fixture. Connect the Extension cable to the Ballast and the Lamp Harness. After the lamps are properly installed, the Ballast can be turned on. Each switch controls one lamp.

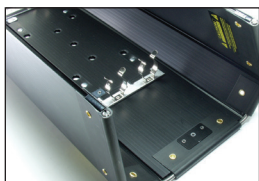
### Lamp Select Feature

The Mega Ballasts have an **HO/Std** switch. Set the selector switch to **HO** for High Output and **Std** for Standard light output.

When operating 8ft or 6ft lamps in high ambient temperature or where the units are rigged into place with restricted airflow, the **Std** setting can be used to lower the color temperature and remove any green spike. The light drops about a half f-stop in exposure when dropping from **HO** to **Std**.



# Accessories and Parts



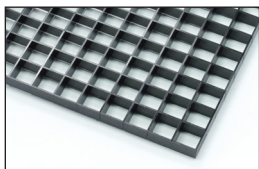
**FIX-9602** 8ft Mega Double Fixture Shell  
**FIX-9601** 8ft Mega Single Fixture Shell

**FIX-7202** 6ft Mega Double Fixture Shell  
**FIX-7201** 6ft Mega Single Fixture Shell

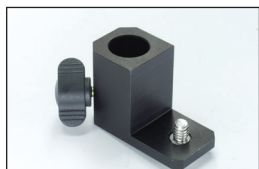


**HAR-9602** 8ft Mega Double Fixture Harness  
**HAR-9601** 8ft Mega Single Fixture Harness

**HAR-7202** 6ft Mega Double Fixture Harness  
**HAR-7201** 6ft Mega Single Fixture Harness



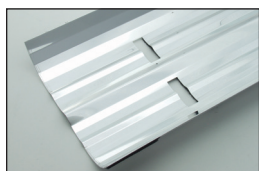
**LVR-4802-B** 4ft Double Louver, Black (2 Required)  
**LVR-4801-B** 4ft Single Louver, Black (2 Required)  
**LVR-3602-B** 3ft Double Louver, Black (2 Required)  
**LVR-3601-B** 3ft Single Louver, Black (2 Required)



**MTP-BAL** Kino Ballast Baby Mount (16mm)



**MTP-LM** Kino 81 Lollipop w/ Junior Pin (28mm)



**REF-9602** 8ft Mega Double Reflector  
**REF-9601** 8ft Mega Single Reflector

**REF-7202** 6ft Mega Double Reflector  
**REF-7201** 6ft Mega Single Reflector



**X09-A7M** Mega Double to Mega Single Splitter

# Expendables



**EXP-LHC-T12** Lamp Holder Clips, T12 (24pk)



**EXP-M&T** Adhesive Mounts & Releasable Ties (25pk)



**PRT-HLC** Kino Locking Lamp Connector (1pk)

**PRT-HLC/50PK** Kino Locking Lamp Connector (50pk)

See our website at [www.kinoflo.com](http://www.kinoflo.com) for more repair parts.

# Cases



**KAS-96**



**KAS-96L**



**KAS-KFC**

Part Number	Description	Dimensions	Weight (Empty)	Holds
INS-L4	4-Lamp Foam Pad	24 x 9 x 1" (61 x 23 x 2.5cm)	N/A	Fits KAS-48, 72, 96
INS-L6	6-Lamp Foam Pad	24 x 13 x 1" (61 x 33 x 2.5cm)	N/A	Fits KAS-54S, 54L, 96L
KAS-72	6ft Lamp Ship Case	72.5 x 11 x 12" (184 x 28 x 30.5cm)	20 lb (9kg)	6ft Lamps (20)
KAS-96	8ft Lamp Ship Case	97.5 x 11 x 14" (248 x 28 x 36cm)	29 lb (13kg)	8ft Lamps (24)
KAS-96L	8ft Fixture Ship Case	101.5 x 14.5 x 16.5" (258 x 37 x 42cm)	38.5 lb (17.5kg)	8ft Mega Double Fixtures (9)
KAS-KFC	Ballast & Cable Crate w/ Lid	21.5 x 15 x 12" (54.5 x 38 x 30.5cm)	6 lb (3kg)	Ballasts, Cables, Mounting Plates

# Ballast Specifications



**Mega Double**

## **BAL-227M-120U** Mega Double Ballast, Univ 120U

**Input Voltage:** 100~240VAC 50/60Hz  
**Output Frequency:** 25kHz  
**Amperage:** F120/2.2A, F100/1.7A  
**Fuse:** 6.3A/250V Time Delay  
**Lamp Switching:** 1~2  
**Output Switching:** HO/Std  
**Ballast Size:** 8.8 x 9.3 x 2.7"  
(22 x 24 x 7cm)  
**Weight:** 3.4 lb (1.5kg)

## **BAL-227M-230U** Mega Double Ballast, Univ 230U

**Input Voltage:** 240~100VAC 50/60Hz  
**Output Frequency:** 25kHz  
**Amperage:** F120/1.1A, F100/0.9A  
**Fuse:** 6.3A/250V Time Delay  
**Lamp Switching:** 1~2  
**Output Switching:** HO/Std  
**Ballast Size:** 8.8 x 9.3 x 2.7"  
(22 x 24 x 7cm)  
**Weight:** 3.4 lb (1.5kg)



**Mega Single**

## **BAL-127M-120U** Mega Single Ballast, Univ 120U

**Input Voltage:** 100~240VAC 50/60Hz  
**Output Frequency:** 25kHz  
**Amperage:** F120/1.1A, F100/0.9A  
**Fuse:** 4A/250V Time Delay  
**Lamp Switching:** 1~off  
**Output Switching:** HO/Std  
**Ballast Size:** 9.5 x 3.6 x 2.7"  
(24 x 9 x 7cm)  
**Weight:** 2.2 lb (1.0kg)

## **BAL-127M-230U** Mega Single Ballast, Univ 230U

**Input Voltage:** 240~100VAC 50/60Hz  
**Output Frequency:** 25kHz  
**Amperage:** F120/0.6A, F100/0.5A  
**Fuse:** 4A/250V Time Delay  
**Lamp Switching:** 1~off  
**Output Switching:** HO/Std  
**Ballast Size:** 9.5 x 3.6 x 2.7"  
(24 x 9 x 7cm)  
**Weight:** 2.2 lb (1.0kg)

For latest Warranty information and Certifications,  
see Kino Flo website at [www.kinoflo.com](http://www.kinoflo.com).

**Environmental: Disposal of Old Electrical & Electronic Equipment.**



This symbol on the product or on its packaging indicates that this product shall not be treated as household waste. This product is made of recyclable materials and should be disposed of in accordance with governmental regulations.

---

Kino Flo, Inc. 2840 N. Hollywood Way, Burbank, CA 91505, USA  
Tel: 818 767-6528 website: [www.kinoflo.com](http://www.kinoflo.com)