

# Film and Television



Image 85 fixtures, greenscreen lighting on feature film set

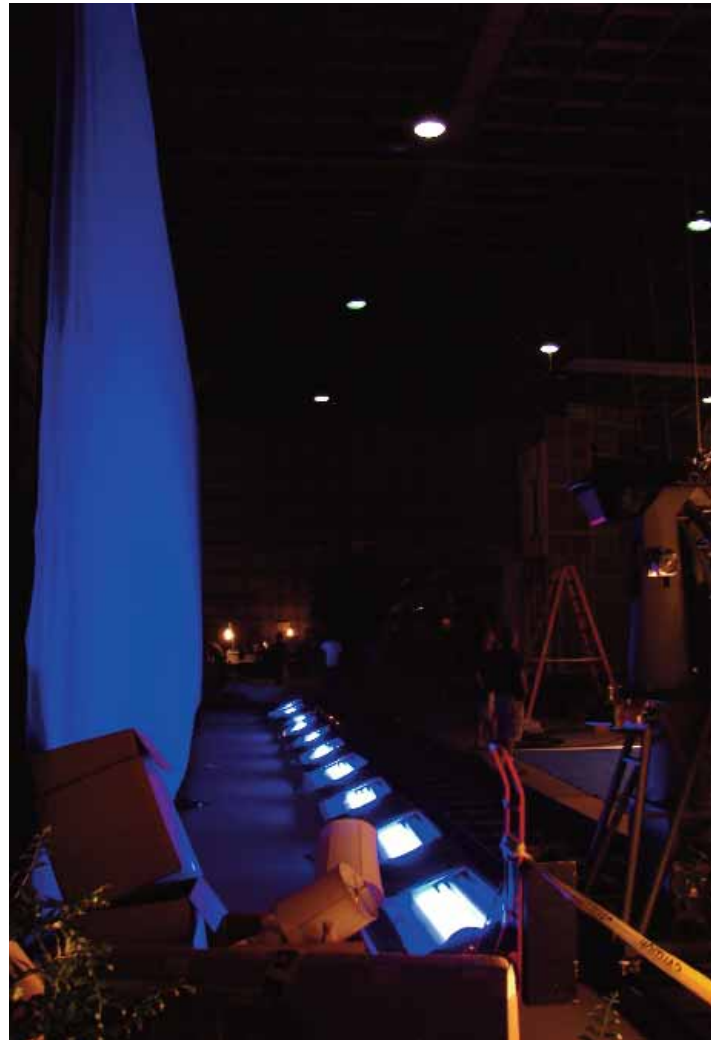


Image 85 fixtures, with bluescreen visual effects on a commercial set



Flathead 80 and Image 85 fixtures, as space lights on made-for-TV movie stage



Mega 4Bank DMX fixtures (8ft), motion picture set



Rob Sweeney

Kamio® 6 ring-light, glamour lighting on a film set



Robert Esmundo

4Bank fixtures, as practical lights, *Mission Impossible III*



4bank systems, on location



Keith Woods

Image 85 fixtures, feature film

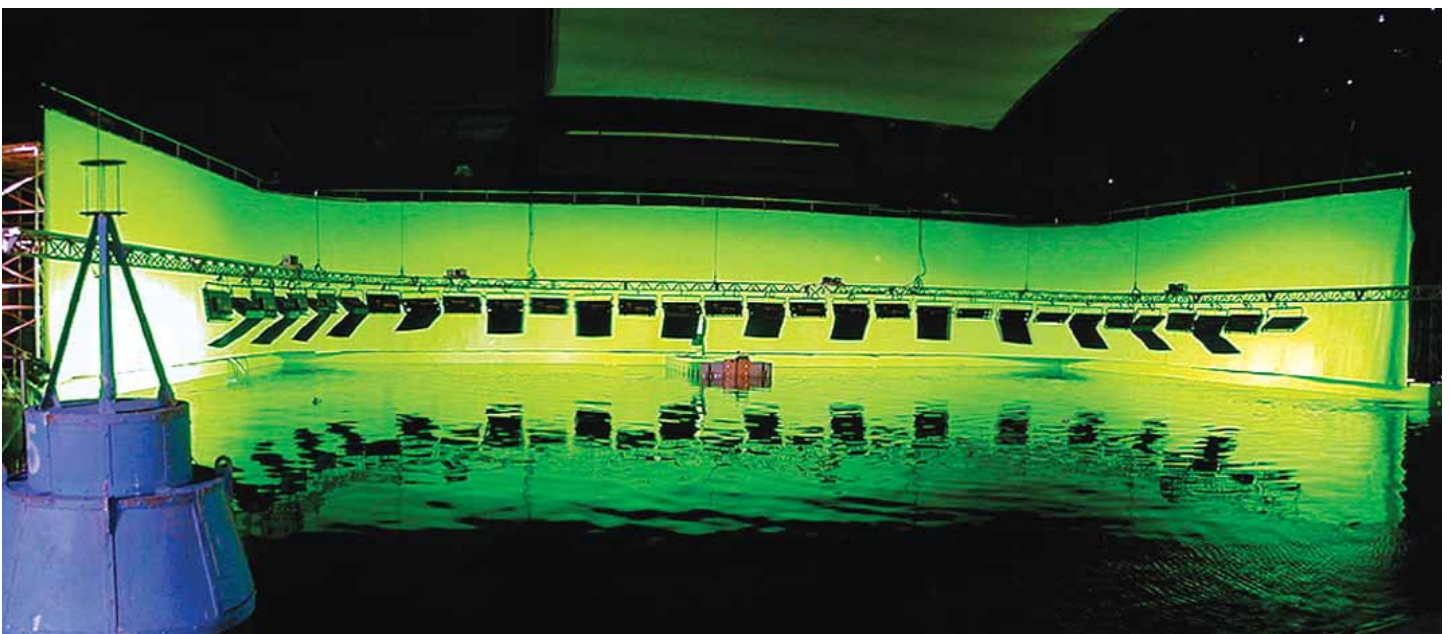


Image 85 fixtures, with greenscreen lamps, feature film water set 300 x 30' (91.5 x 9.1m)

# Broadcast



Diva-Lite 401® fixtures, TV broadcast studio



ParaBeam® 410, lighting TV news anchor desk

Bruce Kurosaki



ParaBeam®, TV broadcast studio



ParaBeam® 410 DMX, lighting public TV broadcast studio

# Video Production



Joe Pugliese

4Bank soft keys, music video set



4Bank top light, TV commercial



Len Levine

VistaBeam® key light, TV commercial



4Bank and Diva-Lite® lighting, TV drama set



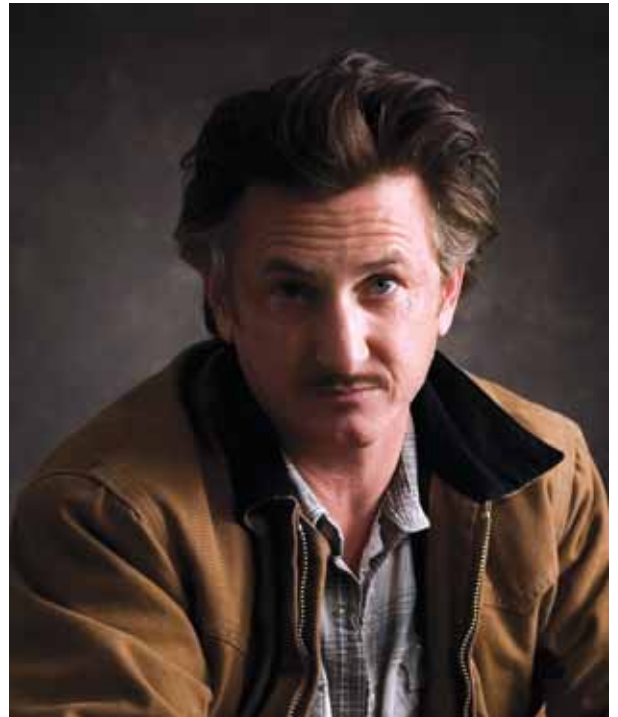
HD studio with Diva-Lite® 401's and True Match® KF32 tungsten balanced lamps

# Still Photography



Ben Cope

Image 85's, key and fill lights



Hamesh Shahani

4ft 4Bank key light



Diva-Lites®, fashion production



Clickbox Studio